

CR SINGLE RAIL CLAMPS



Rail grab with safety lock WLL 1000 - 2000kg

The **CR rail clamps** are designed to lift single rails securely and safely.

The **CRT** is designed to lift tram rail.

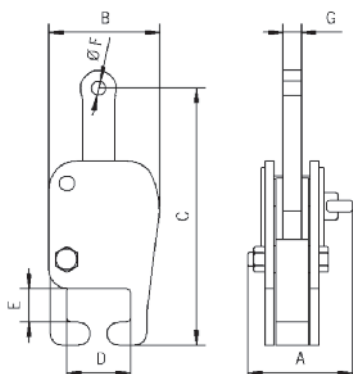
The clamps are designed to fit most types of rail section currently in use. The clamps have a narrow profile to enable attachment to an individual rail when rails are side by side.

The clamps are locked onto the rail-head via a lever operated spring mechanism. It is recommended to use clamps suspended from a lifting beam for long rail lengths.

Clamps can be supplied with a short length of chain and lifting eye as shown in the illustration. This **MUST** be specified at the time of order.



Typical application shot showing a CR1000 in use with a Yale D85 Pul-lift and an 'Iron man'.



Model	CR1000	CR2000
A ¹ , mm	144	144
B, mm	152	163
C, mm	350	350
D, mm	90	90
E, mm	46	46
Ø F, mm	20	20
G, mm	25	25

¹ Scissor



Model	Number of rails	WLL kg**	Weight kg**	Price (standard unit) £**	Price (c/w chain) £***
CR1000	1	1000	13	£652	£706
CR2000	1	2000	13	£786	£832
CRT1000*	1	1000	13	£736	£793

****CRT rail lifting clamps are bespoke designed to suit one specific type of tram rail. Please provide details on rail section when ordering.**
***Per clamp.**