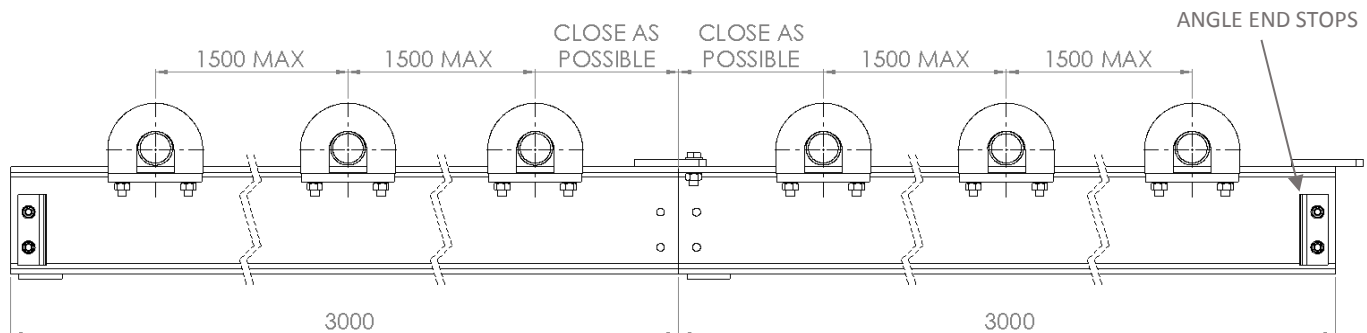
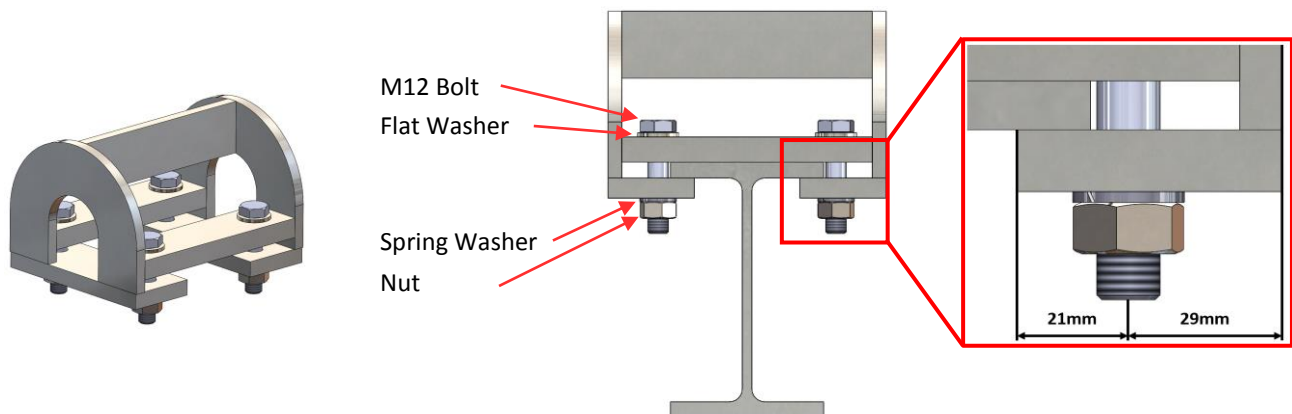


# Runway Beam Assembly Instruction - RB031T

## Correct fit to scaffold for 1t Runway Beam



## 1t Clamp to Runway Beam Connection Detail



### Beams

Supplied in 3m sections from 152 x 89, 7.7mm flange UB. Secured with fish plate to top flange as shown with M12 bolts, flat & spring washers and nuts.

### Bracket

Minimum 3 brackets per 3m beam section and secure with fasteners as shown.

Maximum 1500mm spacing between brackets.

Brackets must be placed as close to runway beam joints as possible.

### End stops

A pair of angle end stops to be fitted to each end of completed runway beam system, secured with M10 bolt, flat & spring washers and nuts.

### Installation

To be installed by a competent person.

Suitability of scaffold structure for working load (plus self weight of structure & hoists if applicable) to be approved by a competent person.

Not certified for use until load tested by a competent person unconnected to the installation.

When installed correctly, WLL of 1000kg.