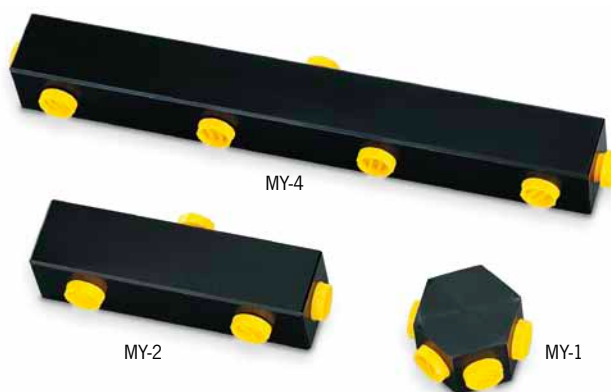


Manifolds model MY

700 bar

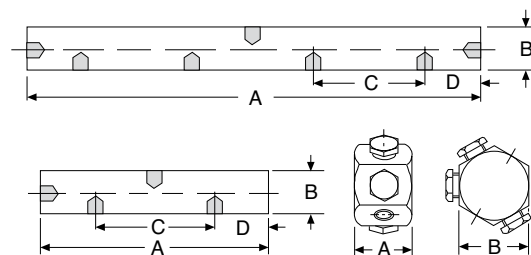
Manifolds are used when several hydraulic cylinders have to be connected to one hydraulic pump. All manifolds are equipped with 3/8 NPT inner oil ports, so that fittings, hydraulic hoses and couplers can easily be attached. To connect a manifold directly to a hand pump a FY-1 double nipple is recommended.

Each manifold is supplied with three steel blind plugs in case not all the oil ports are required.



Technical data model MY

Model	EAN-No. 4025092*	Oil ports	Weight kg
MY-1	*154789	6 x 3/8-NPT inner	0.5
MY-2	*154895	4 x 3/8-NPT inner	0.6
MY-4	*154833	7 x 3/8-NPT inner	1.4



Dimensions model MY

Model	MY-1	MY-2	MY-4
A, mm	40	150	330
B, mm	50	40	40
C, mm	–	90	90
D, mm	–	30	30