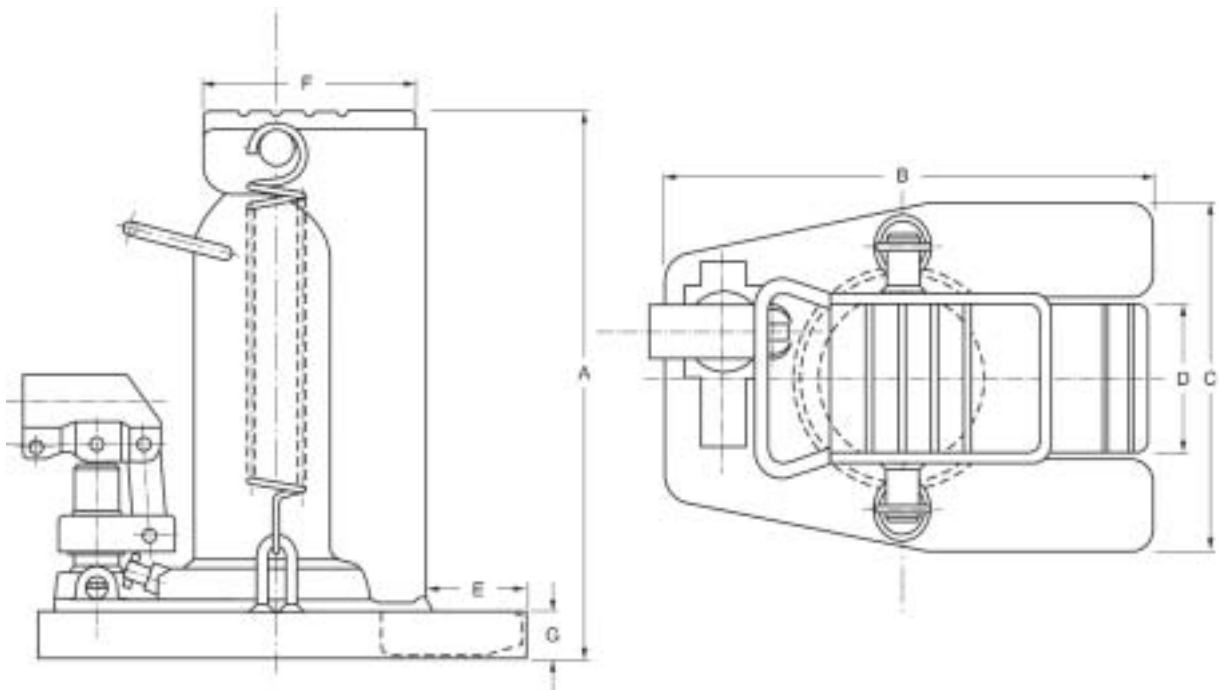


## TECHNICAL SPECIFICATION

**Model:** HTJ-3

**Description:** 3 tonne Hydraulic Toe Jack



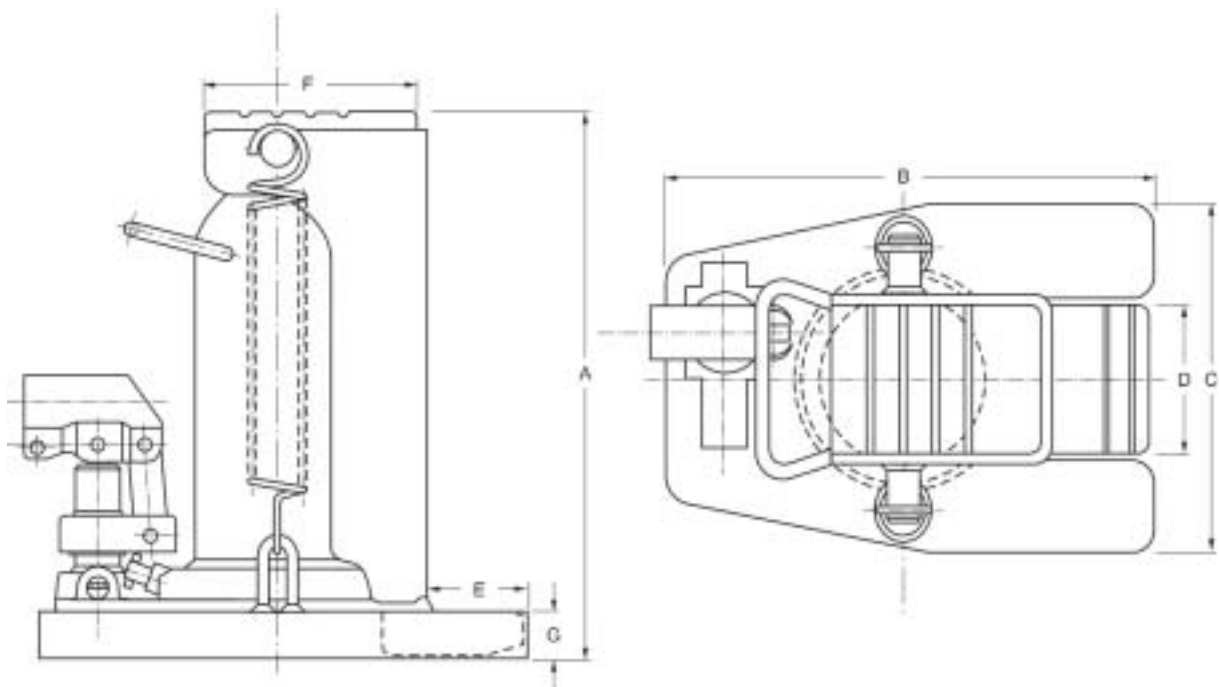
Model	Capacity kgs	Stroke mm	A mm	B mm	C mm	D mm	E mm	F mm	G mm	Weight kgs
HTJ-3	3000	130	230	215	190	88	35	93	16	16.4

*“Lifting Loads the Professional Way!”*

## TECHNICAL SPECIFICATION

**Model:** HTJ-6

**Description:** 6 tonne Hydraulic Toe Jack



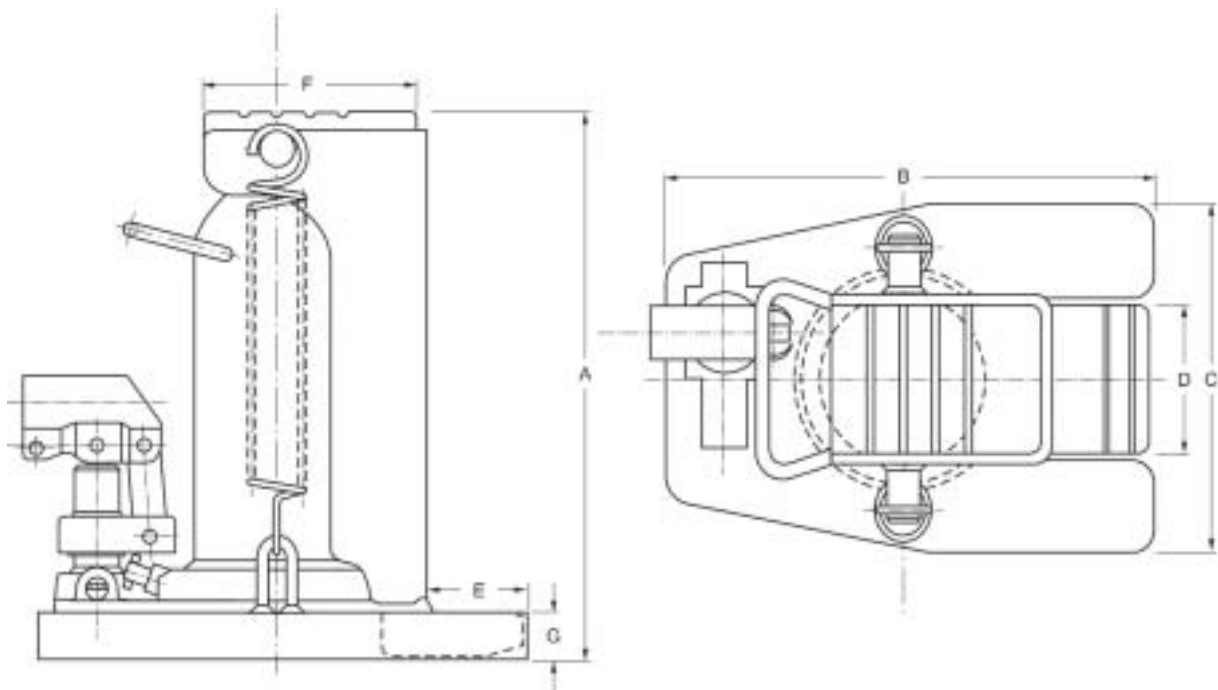
Model	Capacity kgs	Stroke mm	A mm	B mm	C mm	D mm	E mm	F mm	G mm	Weight kgs
HTJ-6	6000	152	267	280	190	88	52	120	22	23.2

*“Lifting Loads the Professional Way!”*

## TECHNICAL SPECIFICATION

**Model:** HTJ-10

**Description:** 10 tonne Hydraulic Toe Jack



Model	Capacity kgs	Stroke mm	A mm	B mm	C mm	D mm	E mm	F mm	G mm	Weight kgs
HTJ-10	10000	130	280	295	230	100	60	140	29	38.2

*“Lifting Loads the Professional Way!”*