

Wall-mounted winch model SW-W ALPHA

Capacity 300 - 1000 kg

A versatile wall-mounted winch for an easy lifting of loads.

Features

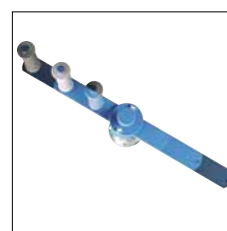
- Light weight robust stamped steel housing and compact design.
- Spur gear drive for optimal efficiency and comfortable handling.
- Rope lead-offs to all directions.
- All parts are zinc-plated for increased corrosion protection, drum with additional special coating.
- Integrated crank with load pressure brake for safe holding of the load.
- Easy and quick mounting onto walls.

Options

- Foldable crank with tiltable handle for use in confined spaces.
- Variable crank with adjustable crank handle.



Option: Foldable crank
with tiltable handle for use in
confined spaces.



Option: Variable crank
with adjustable crank handle.

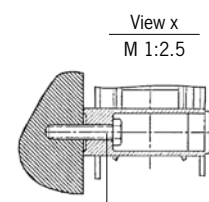
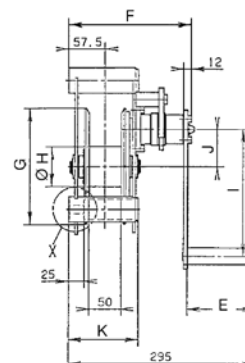
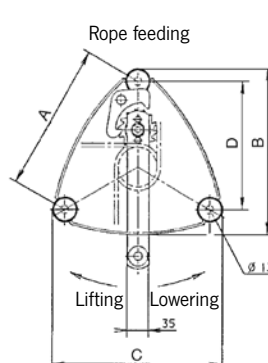
Technical data model SW-W ALPHA

Model	Art.-No.	Capacity 1 st layer kg	Capacity top layer kg	Drum length mm	Rope diameter* mm	Useable rope length 1 st layer m	Useable rope length top layer m	Lift per crank rotation mm	Required crank effort daN	Weight without rope kg
ALPHA 300	030272006	300	130	50	5	1.3	28	57	13	10
ALPHA 500	030272005	500	230	50	6	1	20	55	17	10
ALPHA 750	030272002	750	270	50	7	1	26	45	17	16
ALPHA 1000	030272001	1000	360	50	7	1	26	45	18	16

*recommended rope: DIN 3060 FE-znk 1770 sz-spa

Dimensions model SW-W ALPHA

Model	ALPHA 300	ALPHA 500	ALPHA 750	ALPHA 1000
Art.-No.	030272006	030272005	030272002	030272001
A, mm	234	234	306	306
B, mm	262	262	337	337
C, mm	274	274	357	357
D, mm	203	203	265	265
E, mm	107	107	107	107
F, mm	194	194	194	194
G, mm	183	183	255	255
Ø H, mm	63	63	63.5	63.5
I, mm	200	250	250	320
J, mm	58.6	58.6	92.5	92.5
K, mm	109.5	109.5	107	107



Fastening screws
to be fastened with M12
bolts quality class 8.8
(not included)

For a better guiding of the rope to the suspension point we recommend the use of sheaves or sheave blocks, see page 83.