

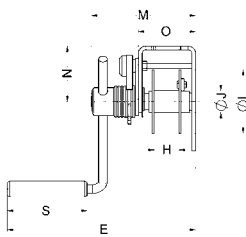
Technical data model MWS

Model	EAN-No. 4025092*	Capacity 1 st layer	Capacity top layer	Crank effort 1 st layer	Lift per crank rotation 1 st layer	Lift per crank rotation top layer	Ratio	Weight without rope	Rope diameter*	Breaking load of rope min. kN	Useable rope length 1 st layer m	Useable rope length max. m	Number of layers max.
		kg	kg	daN	mm	mm		kg	mm				
MWS 150	*635356	150	68	11	122	210	1:1	4	4	5.7	0.8	13	8
MWS 300	*635363	300	166	6	32	44	1:7.4	10	5	15.9	1.8	21	7
MWS 600	*635370	600	308	10	28	41	1:7.4	11	6	22.9	1.2	12	6
MWS 1000	*635387	1000	587	11	20	27	1:17	27	9	51	3.0	25	5
MWS 1500	*635394	1500	844	12	14	19	1:25.7	27.5	10	63	2.7	21	5

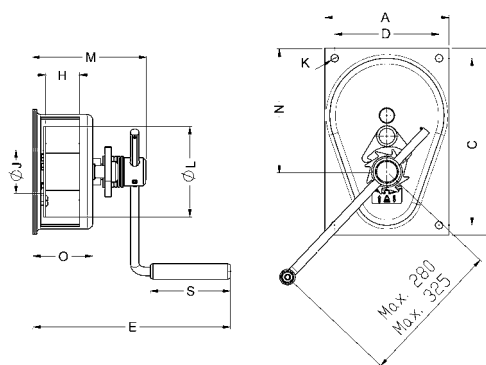
*recommended rope: DIN 3060 FE-znk 1770 sZ-spa

Dimensions model MWS

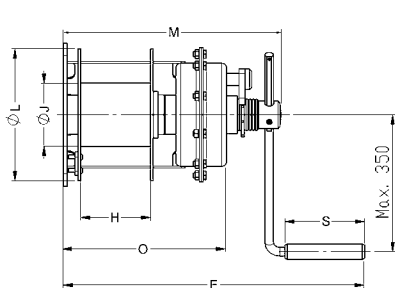
Model	MWS 150	MWS 300	MWS 600	MWS 1000	MWS 1500
A, mm	65	200	200	230	230
B, mm	168	300	300	340	340
C, mm	128	268	268	280	280
D, mm	40	168	168	180	180
E, mm	303	318	318	485	485
G, mm	26	—	—	—	—
H, mm	40.5	55	55	113	113
J, mm	35	70	60	102	102
K, mm	9	12	12	17	17
L, mm	102	145	145	212	212
M, mm	168	182	182	350	350
N, mm	89	199	199	266	266
O, mm	92	96	96	263	263
S, mm	128.5	128.5	128.5	128.5	128.5



Model MWS, capacity 150 kg



Model MWS, capacity 300 - 600 kg



Model MWS, capacity 1000 - 1500 kg