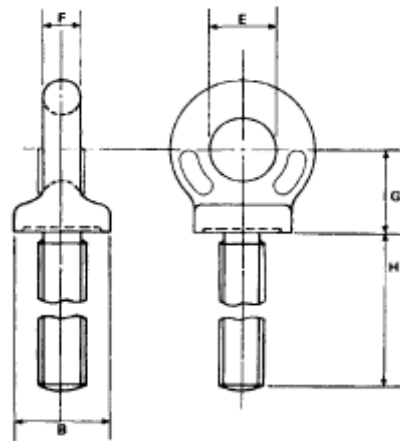


BS Collar Eyebolts Long Shank (Metric)



- * **Material:** As Specified by BS 529
Hardened & Tempered
- * **WLL:** shown at 0° (Vertical) angle of lift
- * **Specification:** BS 529: PART 1 1944
- * **Certificates:** Supplied with relevant certificates.



WLL Tonnes	Thread Size	B (mm)	E (mm)	F (mm)	G (mm)	H (mm)	Weight Each (Kgs)
0.25	M10	22	15	9	20	178	0.2
0.4	M12	28	19	11	25	178	0.2
0.8	M16	36	24	14	32	178	0.5
1.6	M20	43	29	17	38	178	0.8
2.5	M24	57	38	22	51	178	1.5
4	M30	71	48	28	63	178	2.9

* Produced from 12mm Long Shank BS 4278 Table 1: 1984 Forgings

SAFETY NOTE: EYEBOLTS UNDER M12 ARE NOT RECOMMENDED FOR LIFTING