

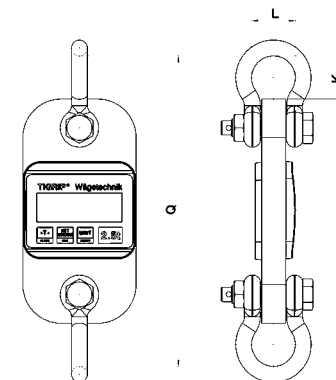
Technical data model TZL and model TZR

Model	TZL 1,0 TZR 1,0	TZL 2,5 TZR 2,5	TZL 5,0 TZR 5,0	TZL 10,0 TZR 10,0	TZL 20,0 TZR 20,0	– TZR 35,0	– TZR 50,0	– TZR 100,0
EAN-No. model TZL 4025092*	*262217	*262224	*262231	*256995	*262347	–	–	–
EAN-No. model TZL shackles 4025092*	*453509	*453653	*453660	*453714	*453714	–	–	–
EAN-No. model TZL hooks 4025092*	*270342	*557665	*557689	*551311	*551007	–	–	–
EAN-No. model TZR 4025092*	*262798	*266222	*272964	*257008	*272971	*455176	*455183	*455206
EAN-No. model TZR shackles 4025092*	*453509	*453653	*453660	*453714	*453714	*453738	*453745	*456746
EAN-No. model TZR hooks 4025092*	*270342	*557665	*557689	*551311	*551007	*552226	*555050	*558785
Measuring range, t	0 - 1.0	0 - 2.5	0 - 5.0	0 - 10.0	0 - 20.0	0 - 35.0	0 - 50.0	0 - 100.0
Nominal load, t	1.0	2.5	5.0	10.0	20.0	35.0	50.0	100.0
Limit load, t	1.1	2.75	5.5	11	22	38.5	55	110
Breaking load, t	≥ 4	≥ 10	≥ 20	≥ 40	≥ 80	≥ 140	≥ 200	≥ 400
Weight without lifting accessories, kg	1.1	1.7	2.1	3.9	6.8	9.4	14.4	39.3
Accuracy of the end value	0.2%	0.2%	0.2%	0.2%	0.2%	0.2%	0.2%	0.2%
Resolution step, kg (partition)	1	1	1	10	10	10	10	50
Operation time, approx., h*	200							
Temperature range (operation)	-10 °C up to +50 °C							
Temperature range (storage)	-20 °C up to +70 °C							
Protection	IP 54							
Display (LCD 20.5 mm high)	4 ½ digits							
Tare range	100% of rated capacity							
Overload warning	Overload warning at 110% of the rated capacity							

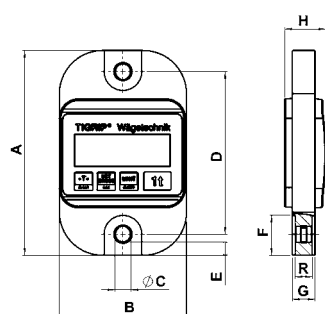
*with 4 x 1.5 V AA batteries

Dimensions model TZL and model TZR

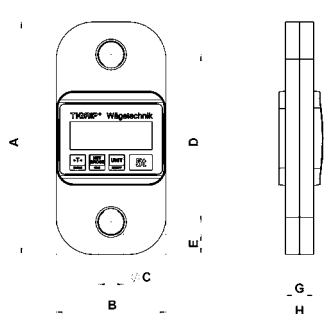
Model	TZL 1,0 TZR 1,0	TZL 2,5 TZR 2,5	TZL 5,0 TZR 5,0	TZL 10,0 TZR 10,0	TZL 20,0 TZR 20,0	– TZR 35,0	– TZR 50,0	– TZR 100,0
A, mm	190	233	250	325	378	405	450	640
B, mm	118	118	118	118	141	156	180	260
C, mm	14	22	27	48	55	66	76	100
D, mm	151	173	180	213	233	245	264	380
E, mm	12.5	19	21.5	22	32	47	55	80
F, mm	37	–	–	–	–	–	–	–
G, mm	21	25	30.5	47	57	67	77	99
H, mm	38.4	42.2	45.1	64.4	74.2	84.2	94.2	113
J, mm	348	604	610	690	780	1000	1170	–
K, mm	30	34	50	105	92	130	140	300
L, mm	26	38	44	95	95	114	132	238
M, mm	10	16	19	35	35	44	51	89
N, mm	25	25	32	50	70	110	115	–
O, mm	23	23	37	63	80	123	132	–
P, mm	17	17	28	44	57	90	97	–
Q, mm	235	309	315	535	562	665	730	1240
R, mm	16	–	–	–	–	–	–	–



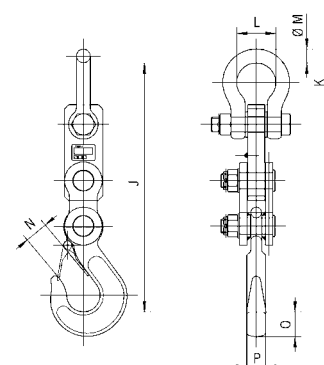
Load indicator
Model TZL/TZR with shackle



Load indicator
Model TZL/TZR 1,0 t



Load indicator
Model TZL/TZR 2,5 up to 100,0 t



Load indicator
Model TZL/TZR with hook